

F&U

ORBIT
SERIES



Instruction manual

This description is applied to Air Conditioners with Wi-Fi function. Please read the manual carefully before using the product and keep it for future reference.

Ver. 1.0

Statement

Federal Communication Commission Interference Statement

This device complies with part 15 of the FCC Rules. Operation is subject to the following two conditions:

(1) This device may not cause harmful interference, and (2) this device must accept any interference received, including interference that may cause undesired operation. Any Changes or modifications not expressly approved by the party responsible for compliance could void the user's authority to operate the equipment. Note: This equipment has been tested and found to comply with the limits for a Class B device, pursuant to part 15 of the FCC Rules. These limits are designed to provide reasonable protection against harmful interference in a residential installation. This equipment generates uses and can radiate radio frequency energy and, if not installed and used in accordance with the instructions, may cause harmful interference to radio communications. However, there is no guarantee that interference will not occur in a particular installation. If this equipment does cause harmful interference to radio or television reception, which can be determined by turning the equipment off and on, the user is encouraged to try to correct the interference by one or more of the following measures:

Reorient or relocate the receiving antenna.

Increase the separation between the equipment and receiver.

Connect the equipment into an outlet on a circuit different from that to which the receiver is connected.

Consult the dealer or an experienced radio/TV technician for help.

FCC Radiation Exposure Statement

This equipment complies with FCC radiation exposure limits set forth for an uncontrolled environment. This equipment should be installed and operated with minimum distance 20cm between the radiator & your body. RF Exposure: A distance of 20cm shall be maintained between the antenna and users, and the transmitter module may not be co-located with any other transmitter or antenna.

ISED Statement

innovation, Science and Economic Development Canada | CES-003 Compliance Label: CANICES-3(B)/NMB-3(B) This device contains licence-exempt transmitter(s)/receiver(s) that comply with innovation, Science and Economic Development Canada's licence-exempt RSS(s). Operation is subject to the following two conditions:

1. This device may not cause interference.

2. This device must accept any interference, including interference that may cause undesired operation of the device. This equipment complies with SED RSS-102 radiation exposure limits set forth for an uncontrolled environment. This equipment should be installed and operated with a minimum distance of 20 cm between the radiator and any part of your body.

"tiquette de conformit" la NMB-003 d innovation, Sciences et D"veloppement "conomique Canada: CANICES-3(B)/NMB-3(B)

L~metteur/r"cepteur exempt de licence contenu dans le pr"sent appareil est conforme aux CNR d'Innovation, Sciences et D"veloppement "conomique Canada applicables aux appareils radio exempts de licence. L~exploitation est autoris~e aux deux conditions suivantes :

1. L~appareil ne doit pas produire de brouillage;

2. L'appareil doit accepter tout brouillage radio"lectrique subi, m~me si le brouillage est susceptible d'en compromettre le fonctionnement.

Pour se conformer aux exigences de conformit" CNR 102 RF exposition, une distance des"paration d'au moins 20 cm doit "tre maintenue entre l'antenne de cet appareil et toutes les person.

CONTENTS

1.APP Download.....	1
2.Account registration.....	2
3.Login account.....	3
4.How to connect smart devices.....	4
5.Smart air conditioner APP control.....	6
6.Device management and sharing.....	12
7.Profile.....	15
8.Wifi attentions.....	16

1.APP Download



1.For Android smart phone

Method1: Please scan the QR code with a browser scanner, download and install the APP.

Method2: Open the Google "Play Store" on your smart phone and search "Smart Life", download and install the APP.



2.For IOS smart phone

Method1; Please scan the QR code and follow the tips to get into "AppStore", download and install the APP.

Method2: Open the Apple "AppStore" on your smart phone and search " Smart Life",download and install the APP

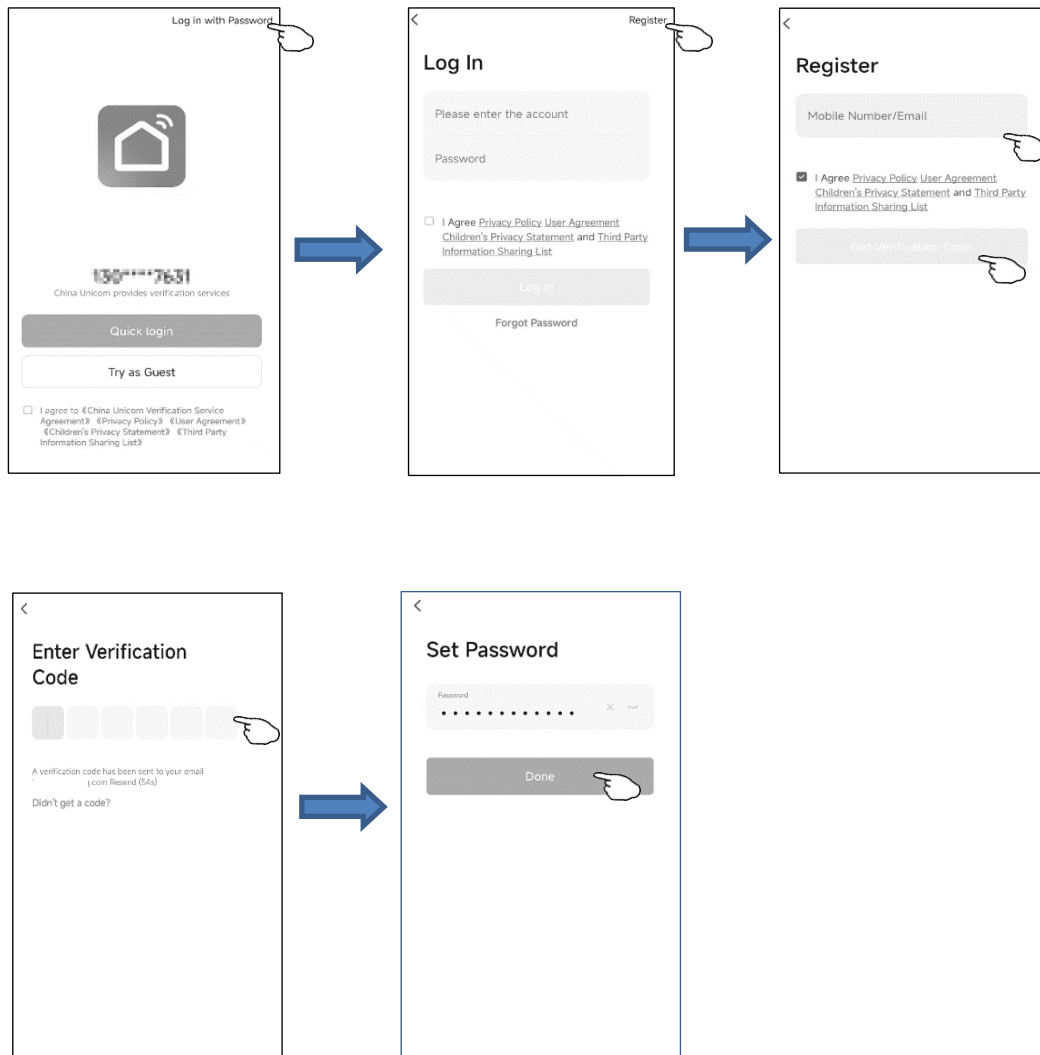


Note:

Please enable the permissions of Storage/Location/Camera for this APP when installing. Otherwise it will have some problems when operating.

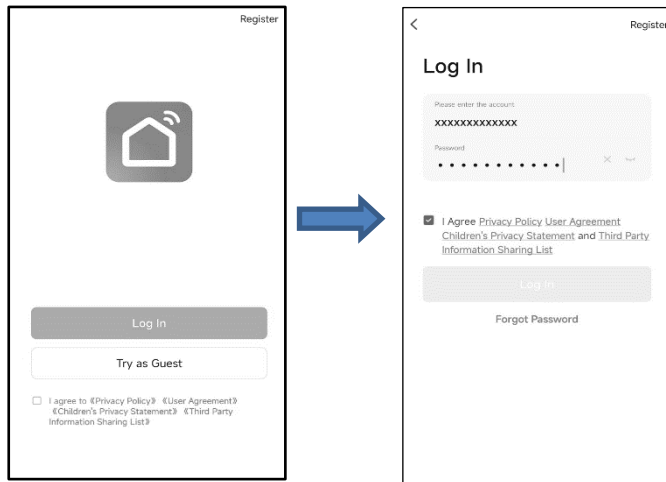
2.Account registration

1. If you don't have any account please tap button "Log in with Password"
2. tap Upper right corner button "Register"
3. Enter your e-mail address, Tap the button "Get Verification Code"
4. Enter the verification code you received from e-mail.
5. Set the Password with 6-20 characters including characters and numbers.
6. Tap "Done".



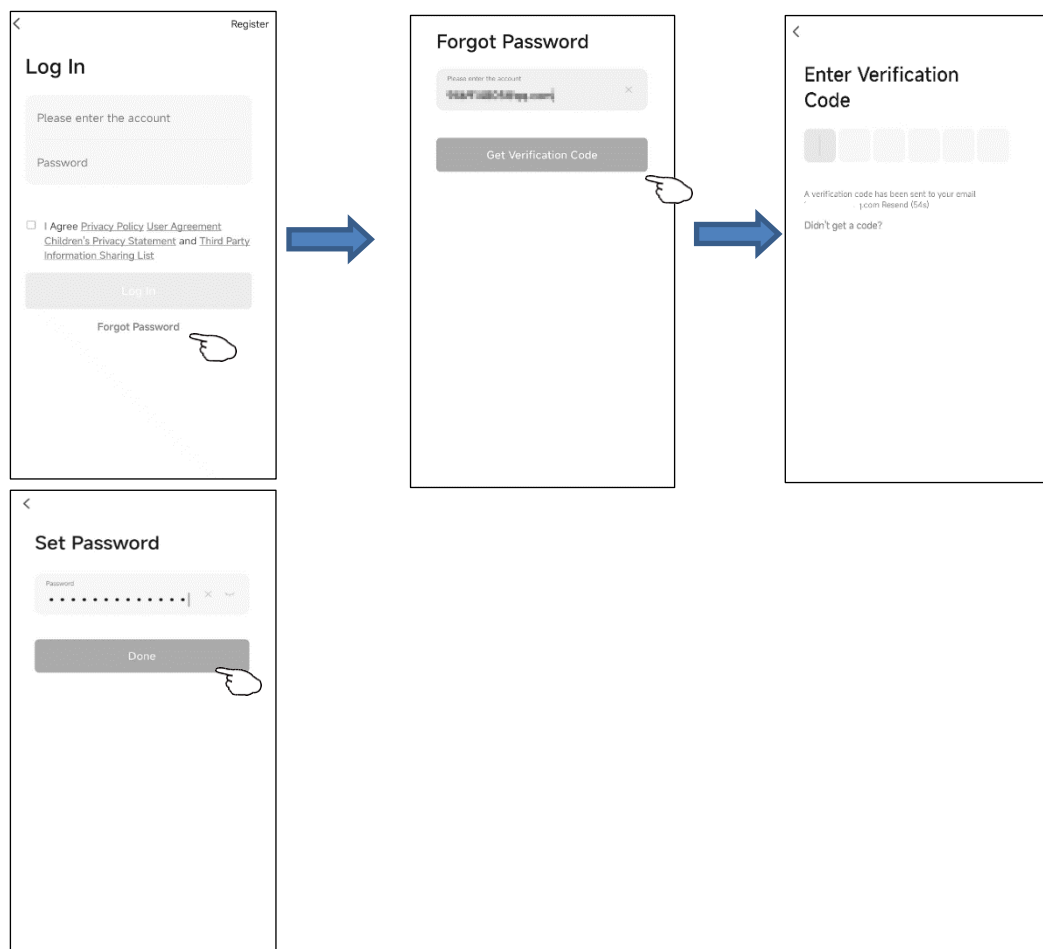
3. Login account

1. Tap "LogIn"
2. Enter your registered account and password.
3. Tap "Log in" button.



If you forgot the password or you want to reset the password, operate as below:

4. Tap "Forgot password".
5. Enter your account(e-mail address) and tap button" Get Verification Code ".
6. Enter the verification code received by your e-mail.
7. Set the new password and tap button "Done"

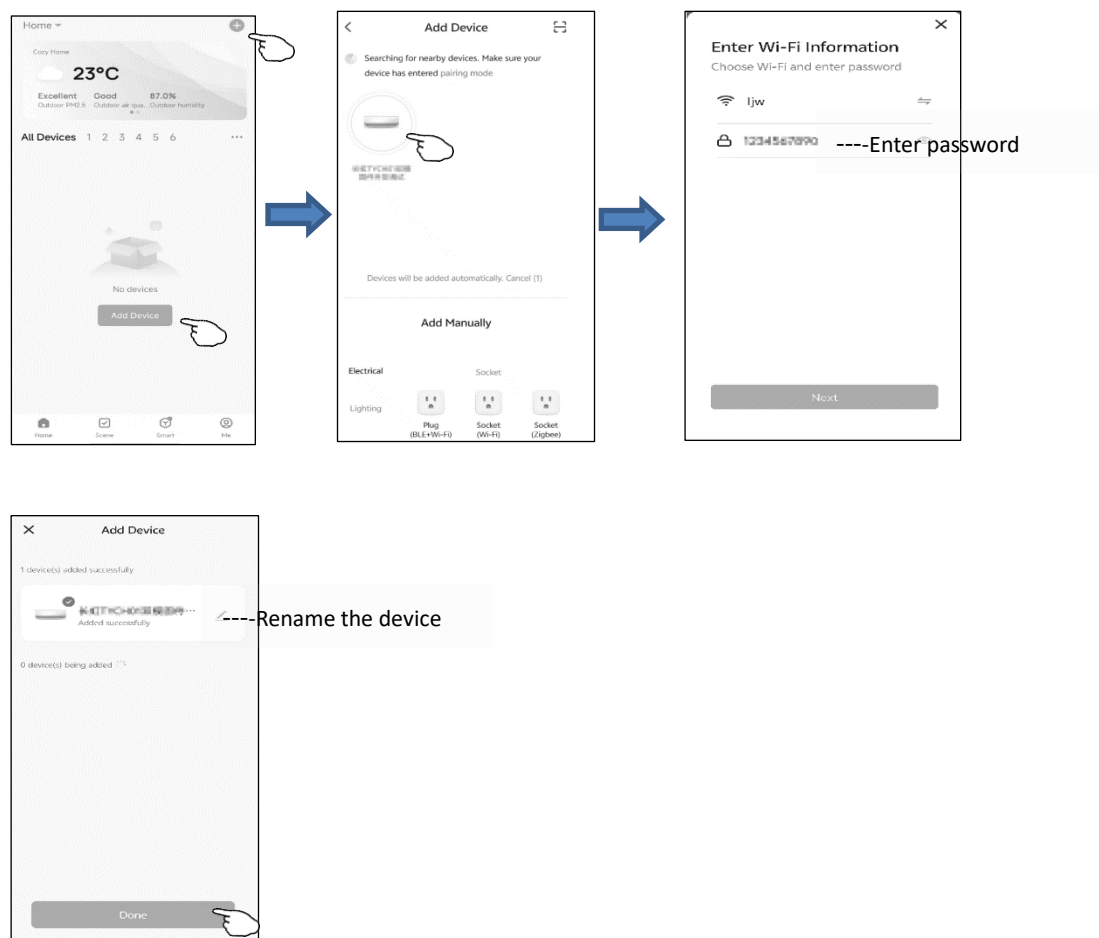


4. How to connect smart devices

There are 2 methods to add the device.

1-Bluetooth mode.

- 1.Power on the indoor unit, turn on the air conditioner, turn on Bluetooth on your phone.
2. please reset the device via the following procedures: Long press the reset button for 5s or press the remote "Display" button six times within 7s ,Please make sure that WIFI icon on device is flashing.
3. Click "+" in the upper right corner of the "Home" screen or tap "Add device" on the room which has no device.
4. APP will Searching for nearby devices. Make sure your device has entered pairing mode, Click on the device that needs to be paired with the network.
- 5.You can see the percent rate of connecting process, which will be successfully connected to the cloud later.

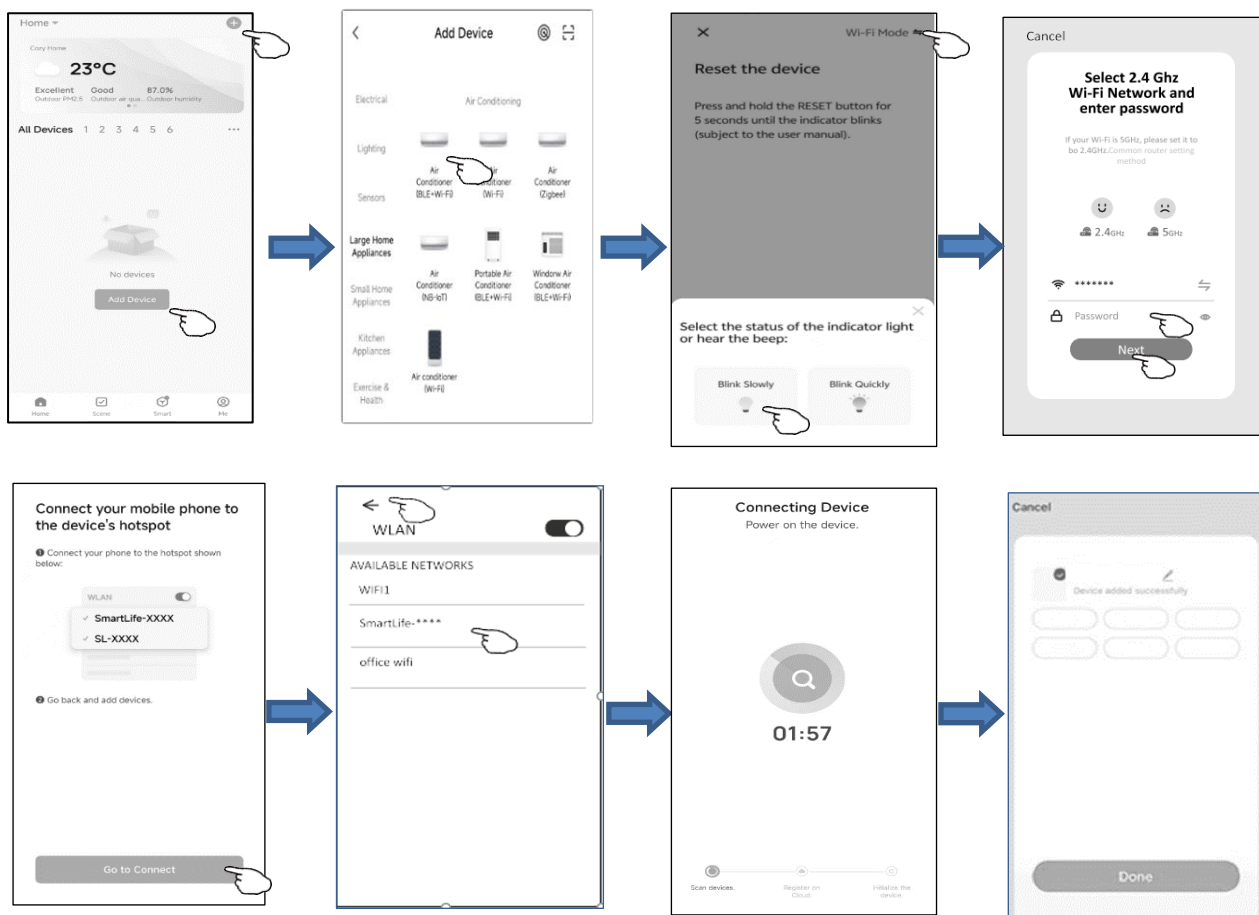


4. How to connect smart devices

There are 2 methods to add the device.

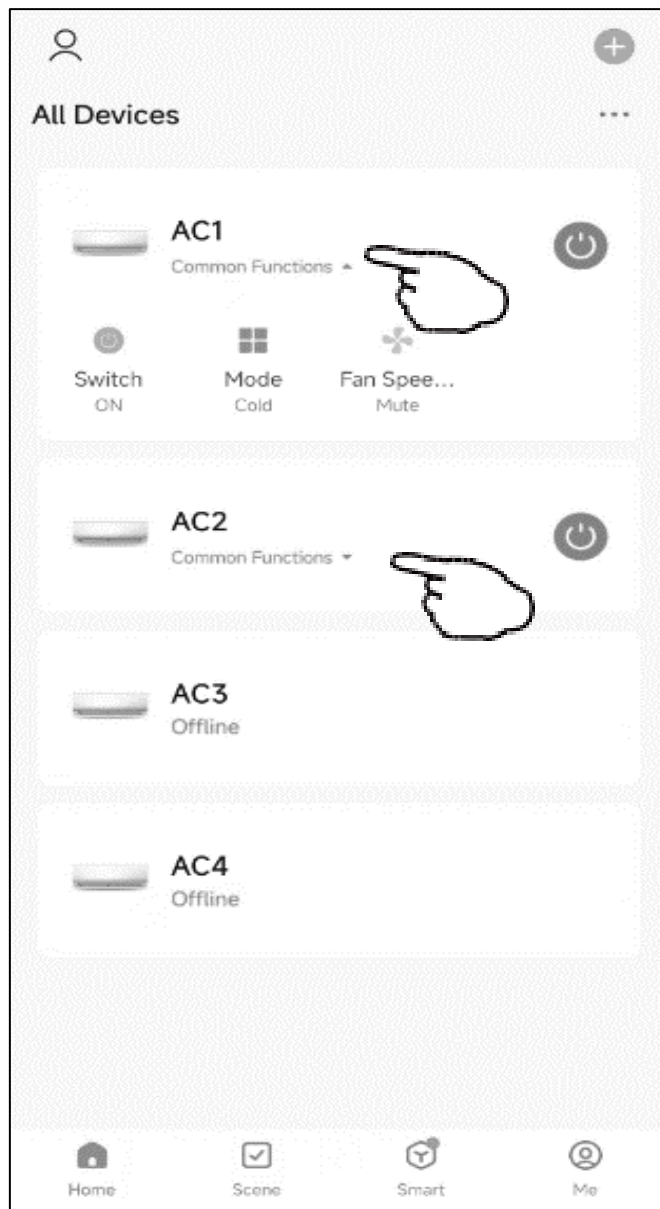
2-WIFI mode.

- 1.Power on the indoor unit, turn on the air conditioner.
- 2.please reset the device via the following procedures: Long press the reset button for 5s or press the remote "Display" button six times within 7s ,Please make sure that WIFI icon on device is flashing.
- 3.Click "+" in the upper right corner of the "Home" screenor tap "Add device" on the room which has no device.
- 4.Tap the"Air conditioner(BLE+Wi-Fi)"logo.
5. Click on the top right corner of the screen to switch to WIFI MODE, then check "Confirm the indicator is blinking slowly" and tap"Blink Slowly".
6. Input the password of the Wi-Fi which the same as your smartphone connected.
- 7.You can see the percent rate of connecting process,which will be successfully connected to the cloud later.

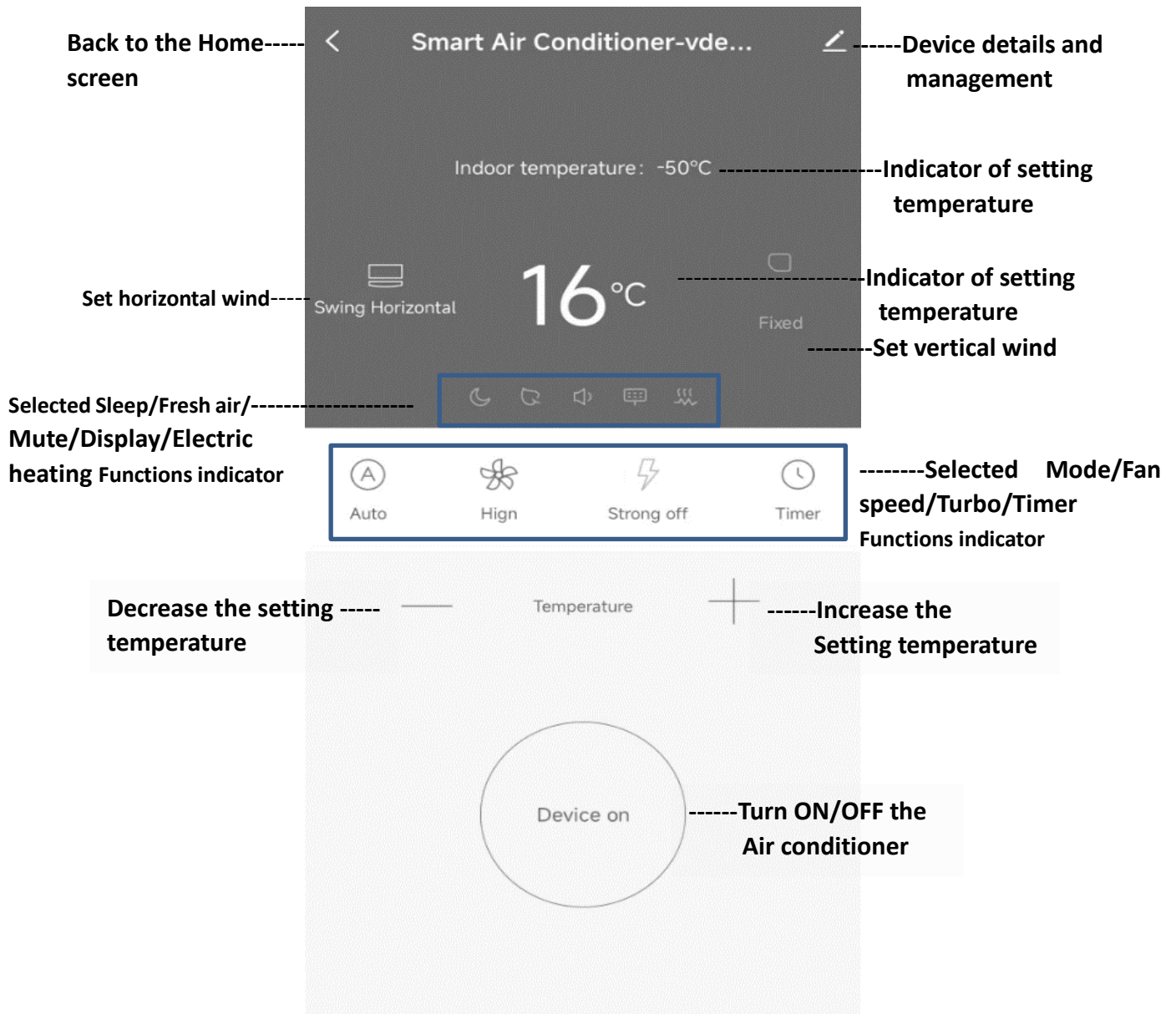


5.Smart air conditioner APP control

- 1.The device control screen will pop up automatically after adding the device.
- 2.The device control screen will pop up manually by tapping the device name on the home screen.



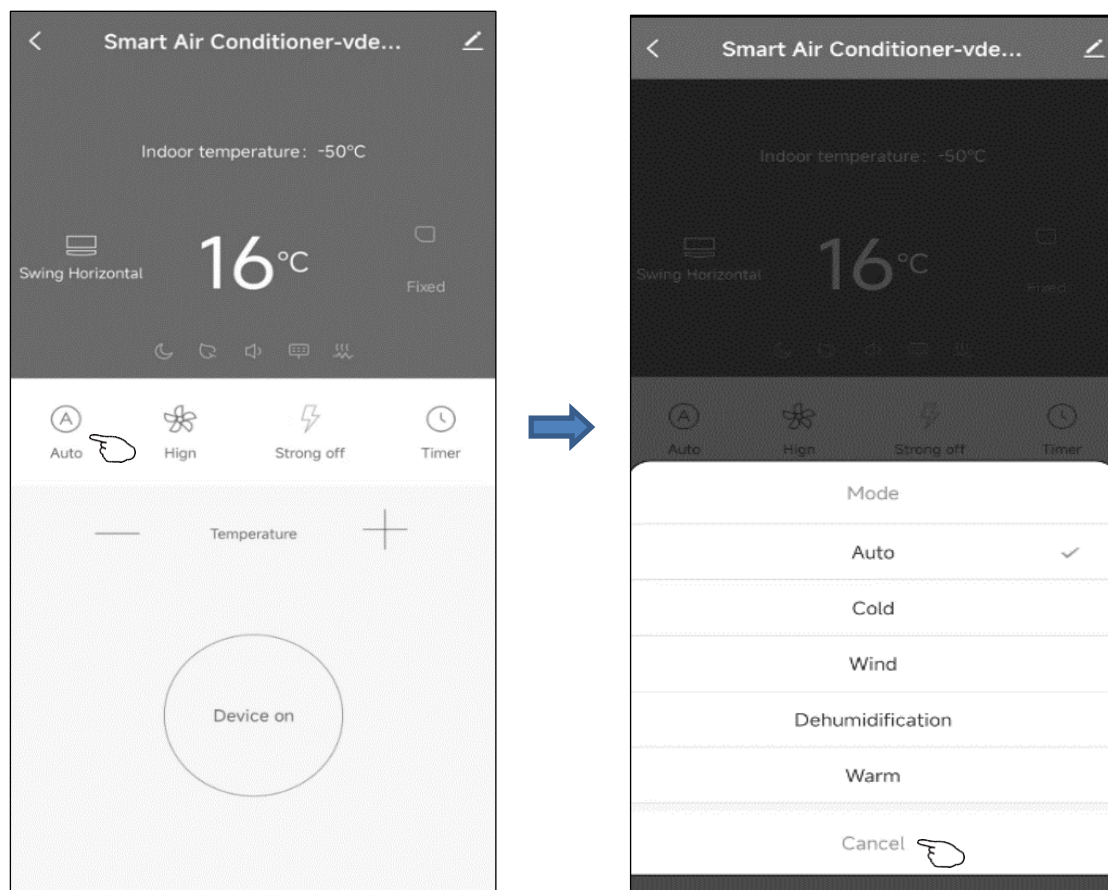
The main control interface



5.Smart air conditioner APP control

Control-Mode setting

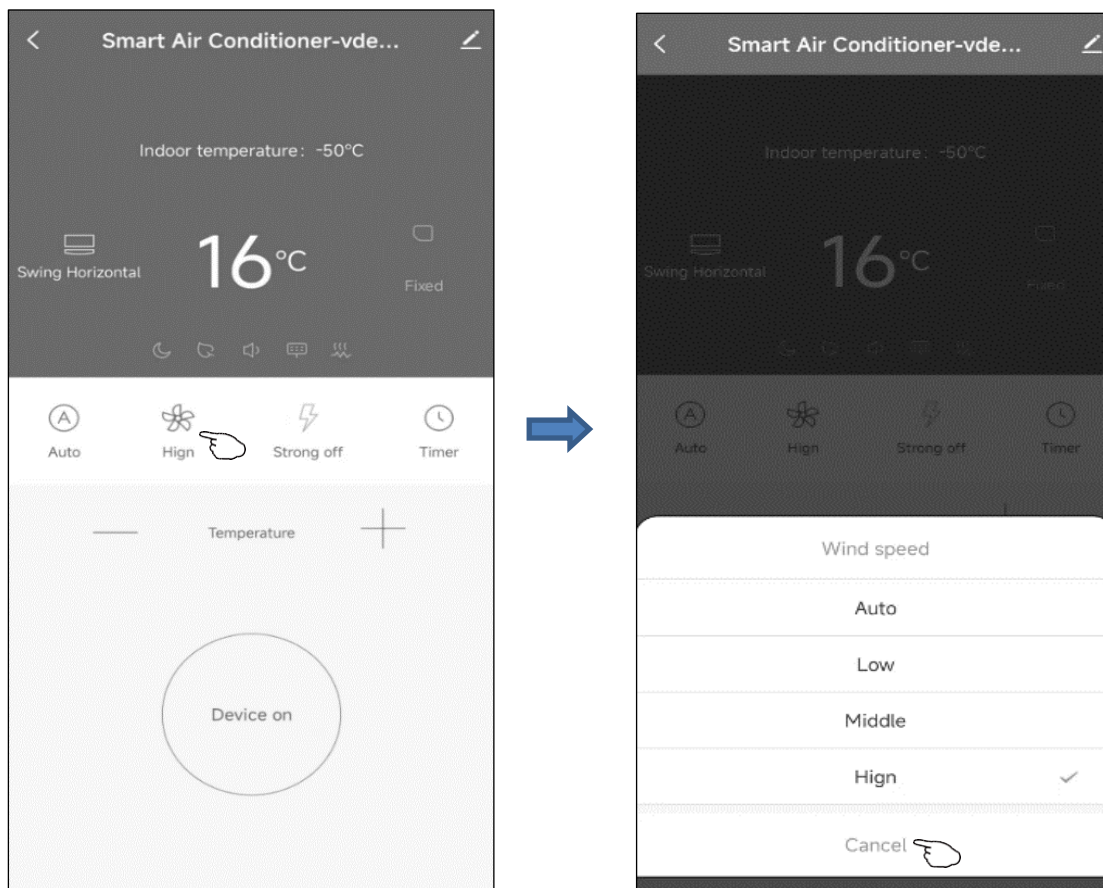
- 1.Tap Mode to pop up the Mode screen.
- 2.Select one of the mode Auto/Cold/Wind/Dehumidification/Warm.
- 3.Tap cancel to cancel the Mode setting.



5.Smart air conditioner APP control

Control-Select fan speed

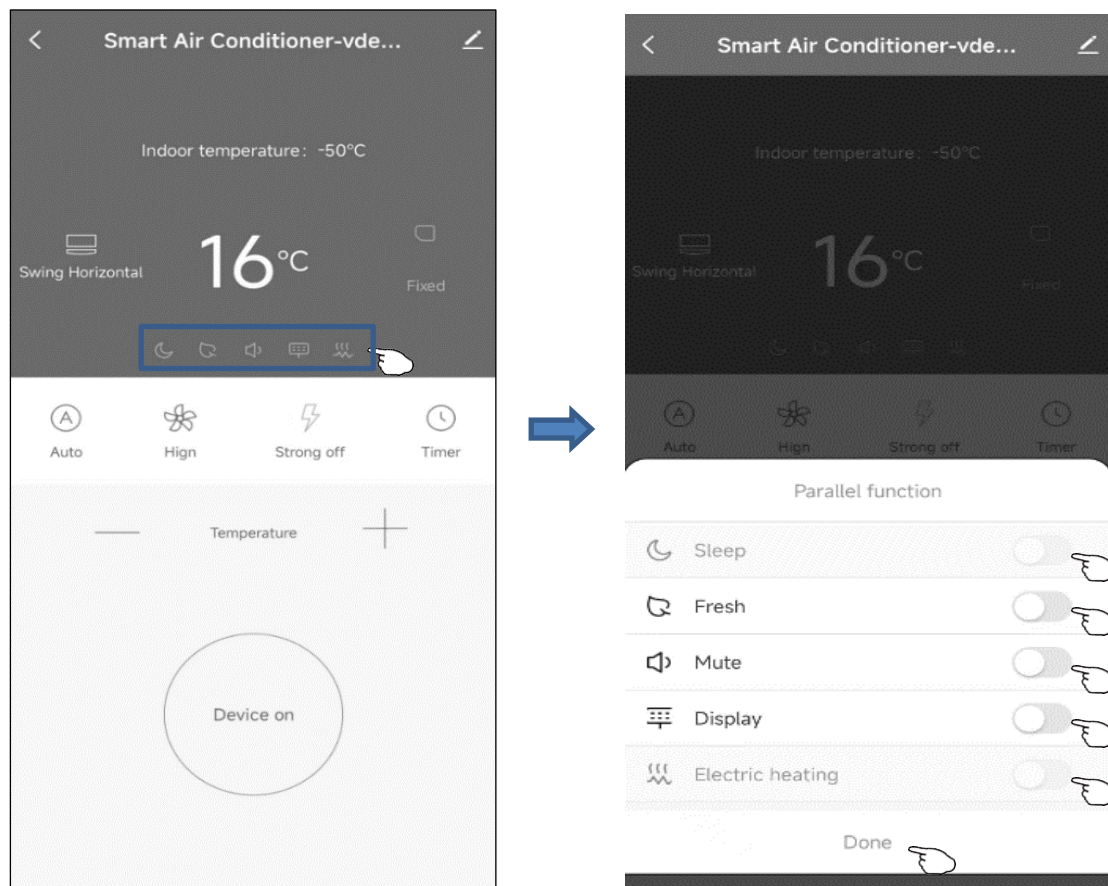
- 1.Tap Fan to pop up the Fan screen.
- 2.Select one of the fan speed High/med/Low/Auto.
- 3.Tap cancel to cancel the selection.



5.Smart air conditioner APP control

Control-Function setting

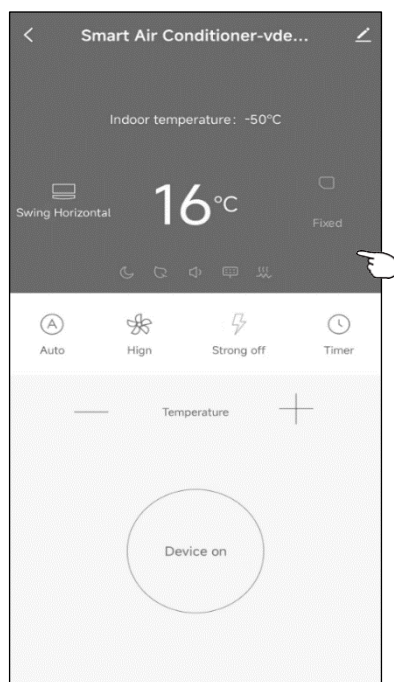
- 1.Tap Function to pop up the Function screen.
- 2.Select one of the functions Sleep/Fresh/Mute/Display/Electric heating.
- 3.Tap cancel to cancel the Function setting.



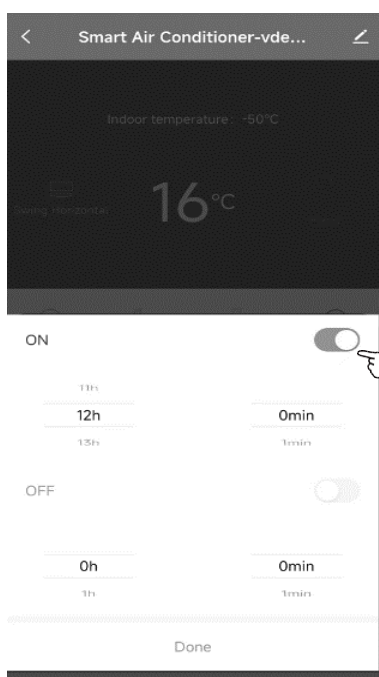
5.Smart air conditioner APP control

Control-Timer adding

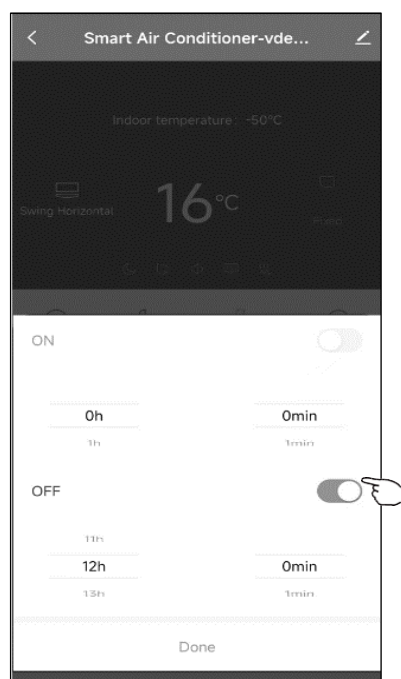
- 1.Tap Timer to pop up the Add Timer screen.
- 2.Select the time.
- 3.Tap Done to add the timer.



Timer on(Only in power OFF state)



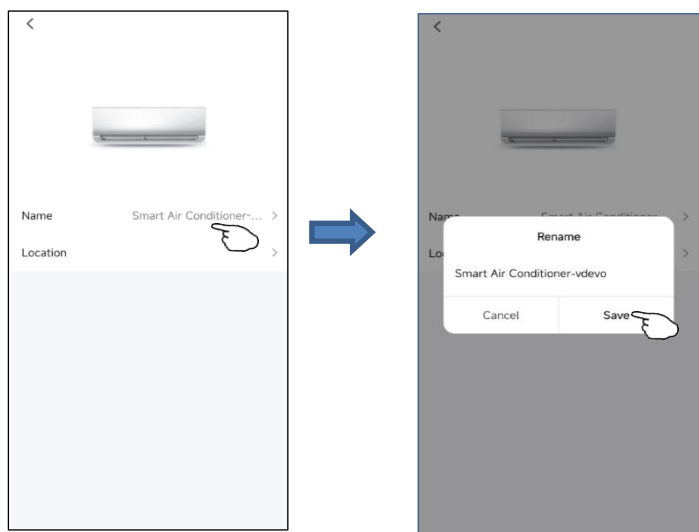
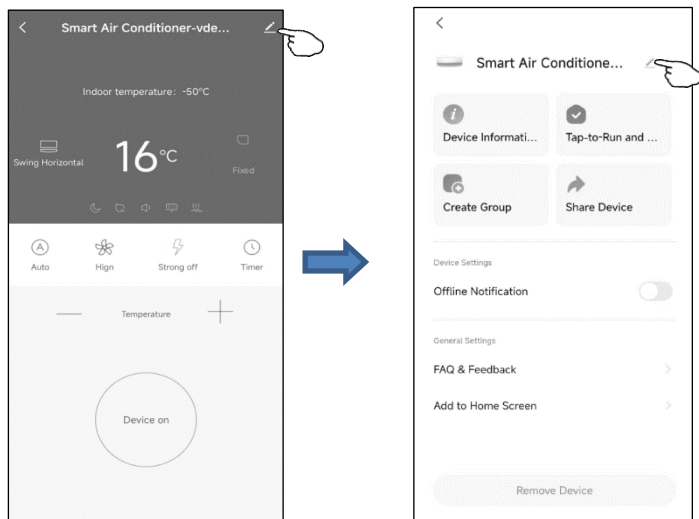
Timer off(Only in power ON state)



6. Device management and sharing

Modify device name

1. Tap on upper right corner of the main control interface.
2. select "Modify".
3. type in the new device name on the pop - up dialog.
4. tap on "Save".



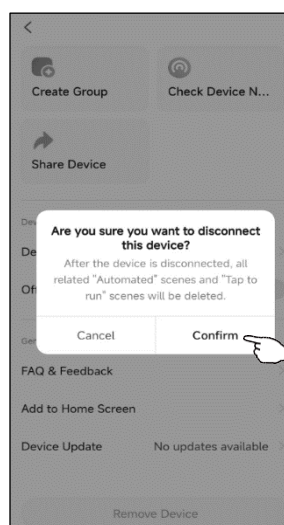
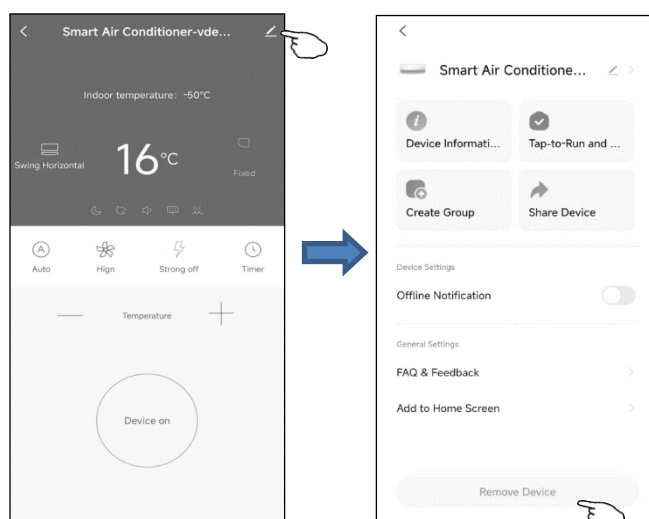
6. Device management and sharing

Delete device or Reconnection

There are 2 methods to remove the device.

1. APP removal

1. Tap on upper right corner of the main control interface.
2. select "Remove device".
3. the dialog pops up to notify you whether to remove device.
4. Tap on "Confirm", device will be removed from the App and switched to reset status.



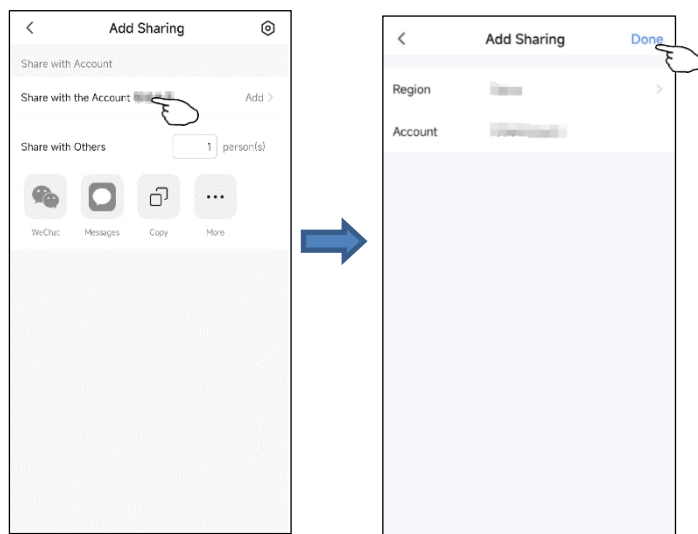
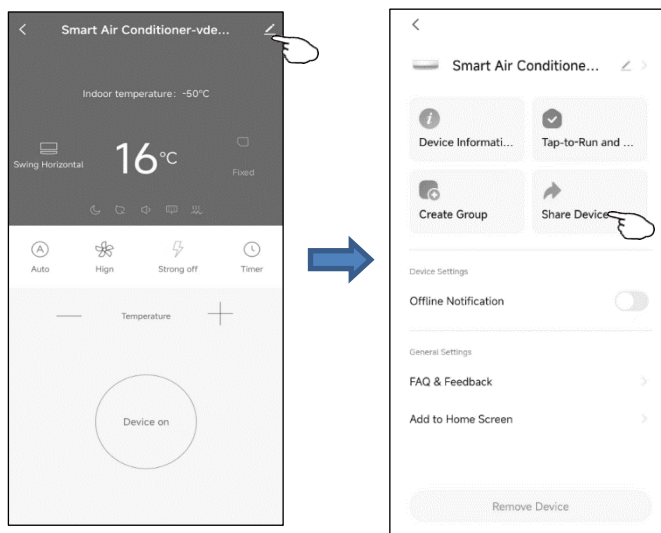
2. Button removal

1. Long press the reset-button for 5s or press the remote "Display" button six times within 7s to reset the Wi-Fi module — buzzer sounds —.
2. the WIFI icon on device is quickly flashing, It will force an existing connection to be disconnected and needs to be re paired.

6.Device management and sharing

Share device

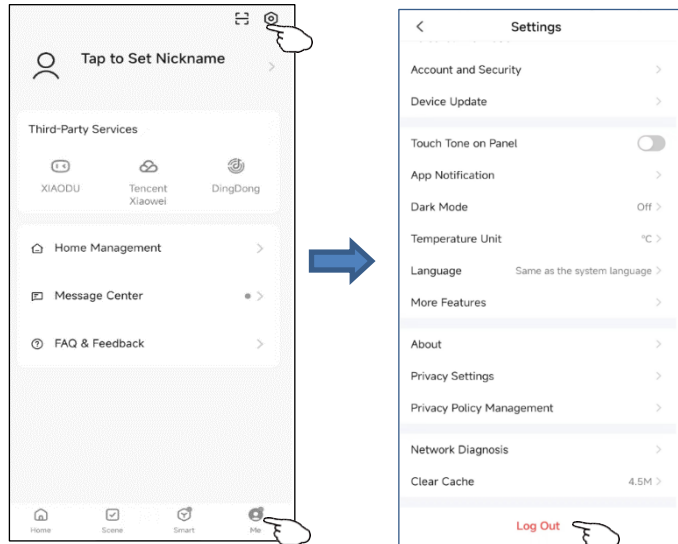
- 1.Tap on upper right corner of the main control interface.
2. select "share device".
3. input the account you want to share. in others account number, tap on"Confirm" . The person would receive the sharing settings and easily control the device with smartphone App.



7.Profile

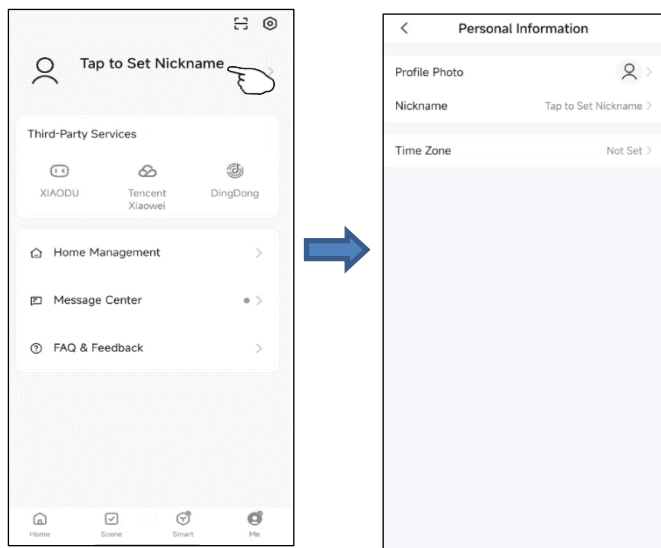
1. Logout

- 1.tap on “Me”.
- 2.Click on the settings in the upper right corner of the interface.
- 3.you could then logout the current account.



2.Modify profile information

On "Me" page, tap on the personal menu to modify the picture, name and other account information.



3. FAQ&Feedback

On "Me" page, tap on "Faq&qFeedback" menu to submit your feedback.

8.Wifi attentions

1.Important notifications To prevent unnecessary harm, please keep in mind of the following notifications Please don't use Wi-Fi where the wireless device is not allowed, such as airport, medical places and etc. Please don't turn on your smartphone in dangerous places, such as gas station, fuel or chemicals manufactures, and etc. Please don't use mismatched devices. Please find a qualified repair man to fix the Wi-Fi. Please refer to the user manual for the detailed connection methods, please don't randomly use mismatched devices.

2 Notifications:

2.1 The App control quality is affected by your smartphone, Wi-Fi network, distance with router, and internet status. Sometime it is not very smooth. It has nothing to do with air conditioner itself;

2.2 If you find it failed to control with your smartphone, please check your internet status at first, then check whether it is successfully connected with air conditioner; If these circumstances are alright, please delete the device first on your App and start the procedures all over again from the step 3.2.

2.3 If you still cannot solve the issues with the methods above, please control the Air conditioner with your normal remoter and then request for after-sale service.

Radio Equipment Directive (2014/53/EU)

We, Kallipi Karyda & Co., LP,

hereby declare that the products, (including the Wi-Fi modules), comply with the essential requirements and relevant provisions of the RED Directive 2014/53/EU.

Karyda Kalliopi & Co

87A, 17th November str.
55535, Pylea, Thessaloniki, Greece
Tel. +302310944944
F: +302310944940
www.fandu.gr